



Grighko®

BASIC
LEOTARDS

CONCENTRATE ON THE MAIN THING

WE CAREFULLY CONTROL OUR PRODUCTION TO MAKE YOUR GARMENT FEEL LIKE SECOND SKIN – BECAUSE WHEN YOU FEEL COMFORTABLE, YOU CAN CONCENTRATE ON THE MAIN THING – DANCE.

OEKO-TEX®
CONFIDENCE IN TEXTILES
STANDARD 100
15.HTR.60135 HOHENSTEIN HTTI

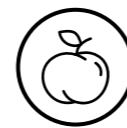
The best Italian polyamide micro only

The supplier of the fabrics we use has a certificate, approving its quality. **STANDARD 100** by **OEKO-TEX®** is one of the world's best-known labels for textiles tested for harmful substances. It stands for customer confidence and high product safety. If a textile article carries the **STANDARD 100** label, you can be certain that every thread has been tested for harmful substances and that the article, therefore, is harmless for human health.

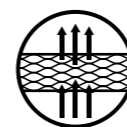
MATERIAL FEATURES OF GRISHKO® GARMENTS



We source the best existing high-tech and soft materials available for sportswear that guarantee comfort during any movements.



Super soft like a peach brushed microfiber makes our garments feel like second skin.



Polyamide micro – hi-tech breathable material.



Easily absorbs moisture and looks good even when it's a bit damp.



Fast-drying and breathable, thus extremely comfortable.



UPF 50+ allows one to wear the garment during outdoor classes without worry.



Special bi-stretch technology helps you to feel free during stretching and active exercises.



Keeps its form and doesn't lose shape after multiple washings.



Fade resistant. Colors remain bright after a large number of washes.



CAREFUL PRODUCTION FOR YOUR CONFIDENCE



We use three different types of thread to answer stretching properties of the materials.



We pay attention to the end of each seam by securing it. This guarantees longer lifespan for your garment.



FANTASTIC
FUNCTION
WAS OUR
FOCUS
WHEN WE
CREATED
THESE NEW
PATTERNS



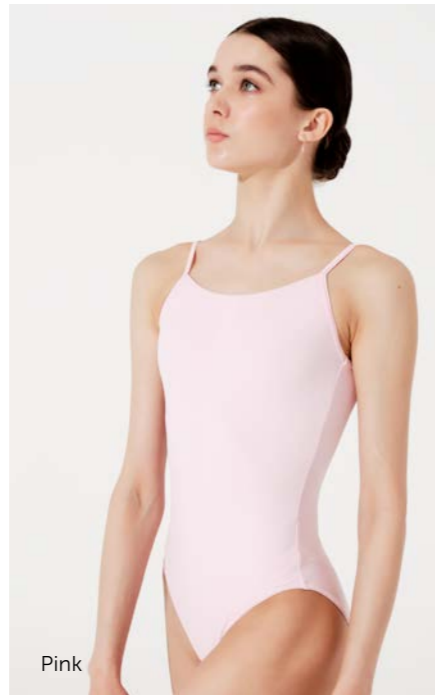
DP08MP Alla

Camisole leotard

NEW BASIC — Alla features an adjustable pinch at the bust line, thin camisole straps and a ballet cut to the leg line. Available in nine colors for the perfect dress code option!



Black



Pink



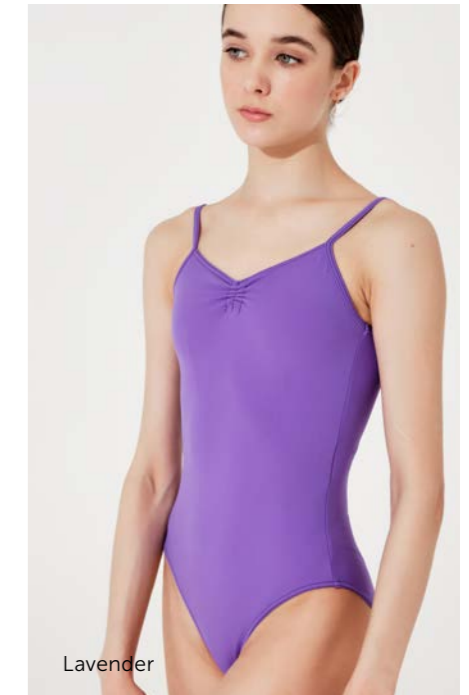
Lilac



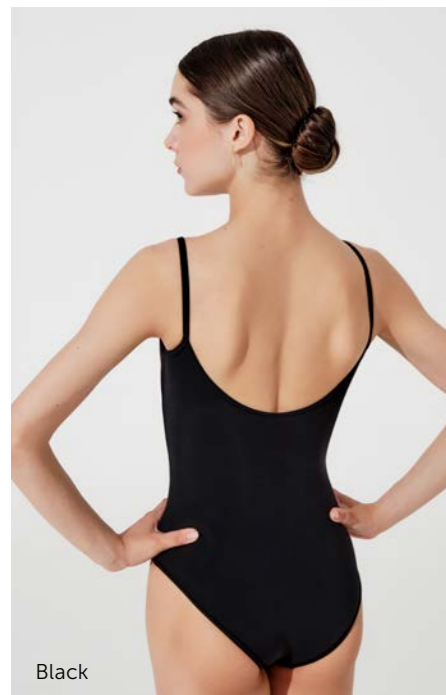
Light Blue



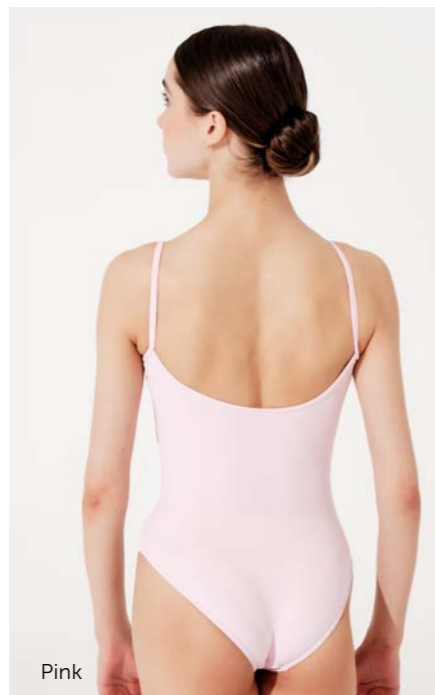
Red



Lavender



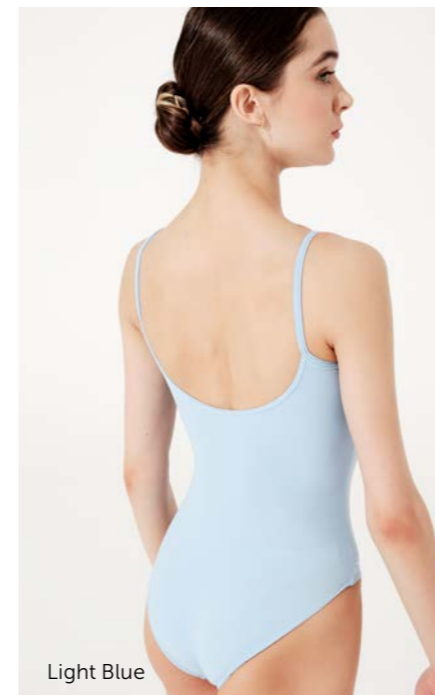
Black



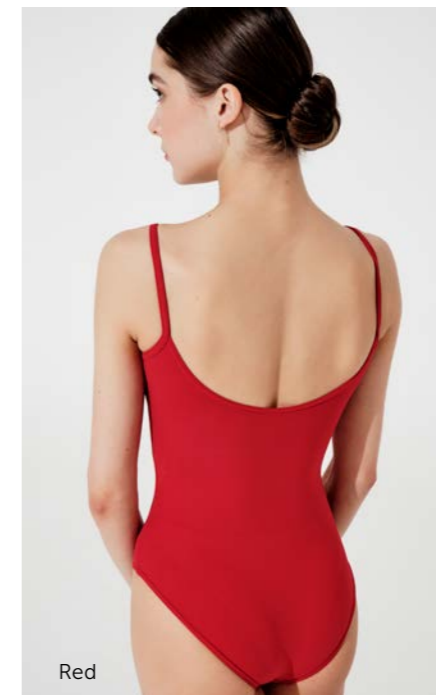
Pink



Lilac



Light Blue



Red



Lavender

Adult sizes

DP08MP Alla

International size	XS	S	M	L	XL
Size RU	42	44	46	48	50

Material: 80% polyamide micro, 20% elastane.

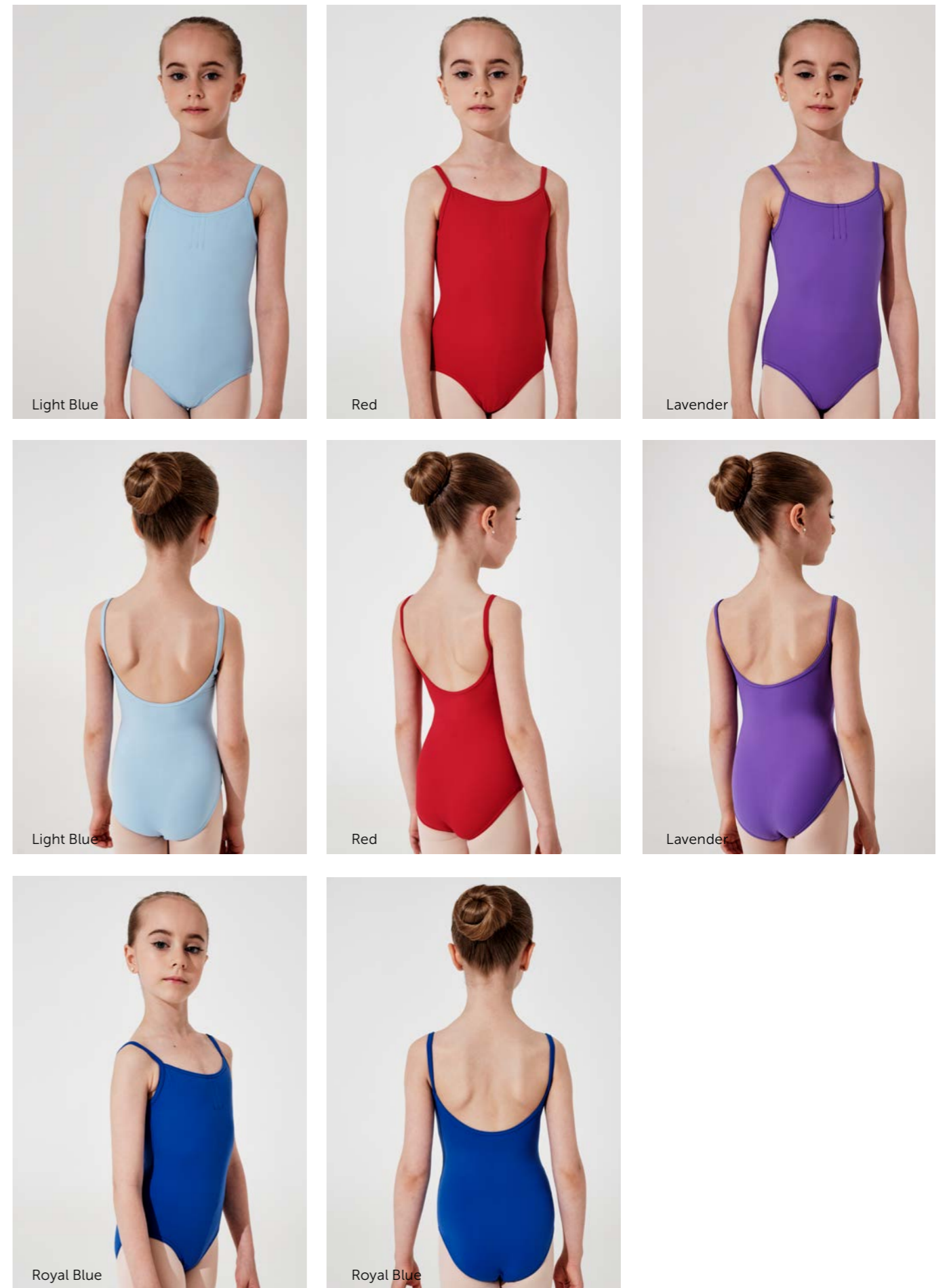
All adult sizes are fully lined.

- Black
- White
- Light Blue
- Pink
- Red
- Royal Blue
- Lilac
- Bordeaux
- Lavender

DPD08MP Little Alla

Camisole leotard

NEW BASIC — Little Alla is the children’s version of Alla. Available in five sizes and nine colors, Little Alla has an adjustable pinch at the bust line, a scoop back and a ballet cut leg line.



Youth sizes DPD08MP Little Alla

Sizing by age EU	2-4 Y	4-6 Y	6-8 Y	8-10 Y	12-14 Y
Size RU	26	30	32	34	38

Material: 80% polyamide micro, 20% elastane.

All youth sizes are fully lined.

- Black
- White
- Light Blue
- Pink
- Red
- Royal Blue
- Lilac
- Bordeaux
- Lavender

WE WENT
ABOVE
AND
BEYOND
TO OFFER
DANCERS
THE BEST
BASICS
ON THE
MARKET!



DP09MP Alyona

Tank leotard

NEW BASIC — Alyona has a modest scoop neck line with a lower scoop on the back, plus a ballet cut leg line. Available in nine colors and five sizes, Alyona is the quintessential basic that every dancer needs!



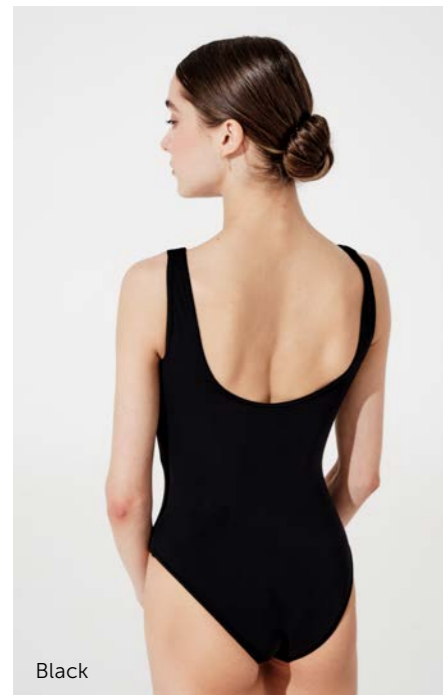
Black



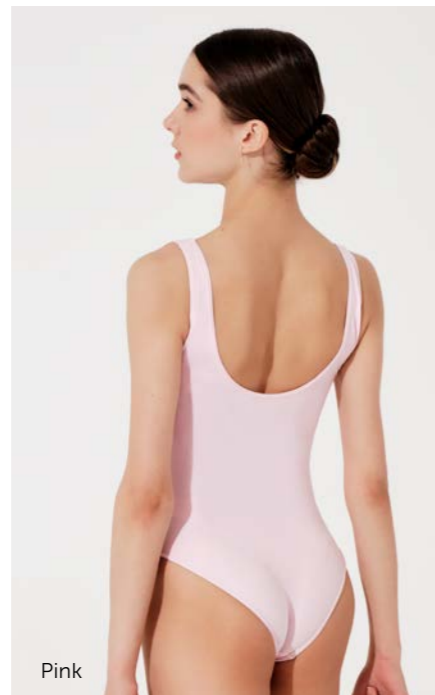
Pink



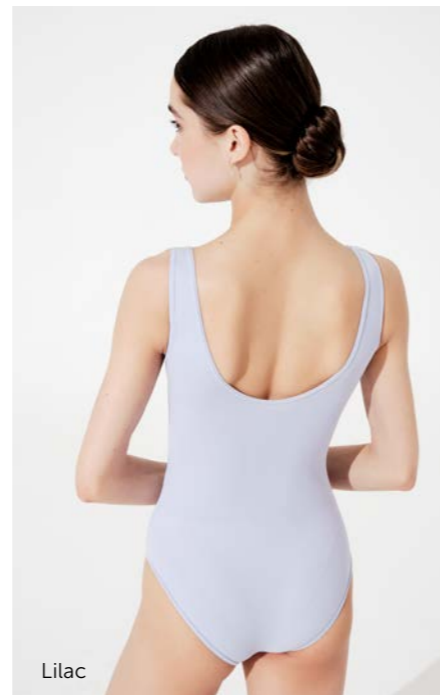
Lilac



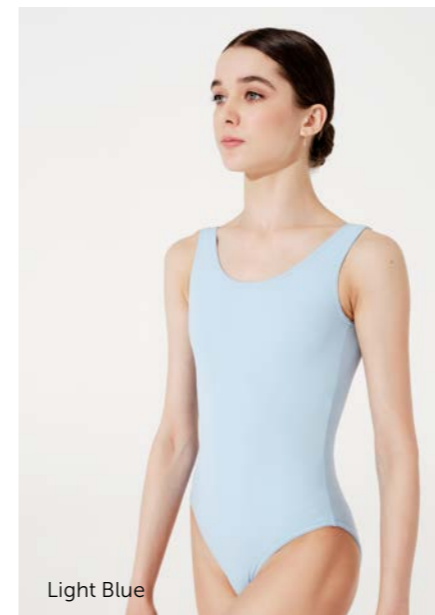
Black



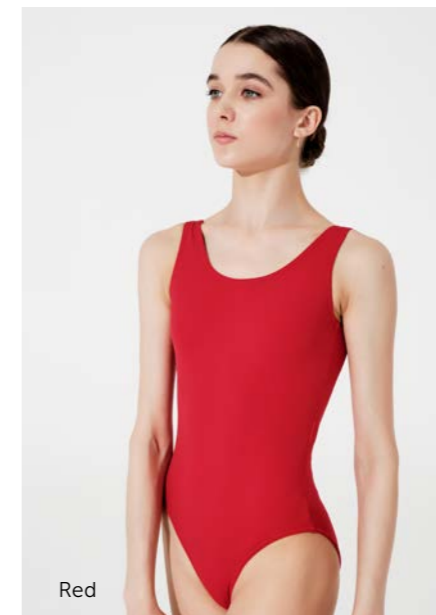
Pink



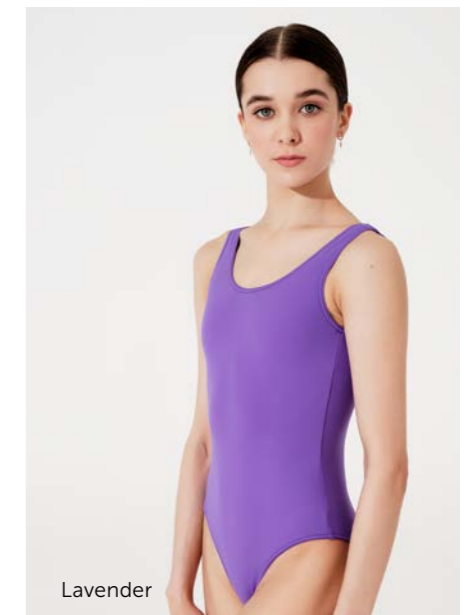
Lilac



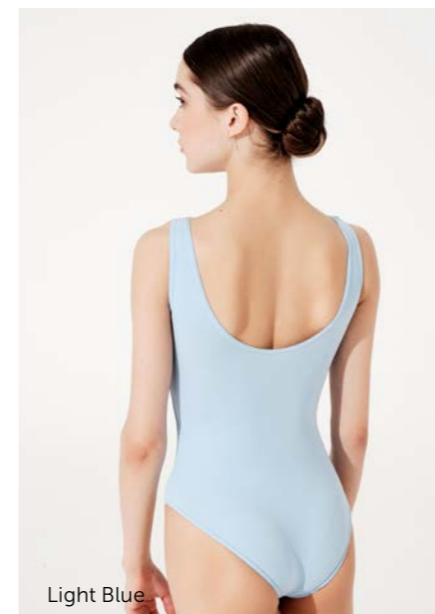
Light Blue



Red



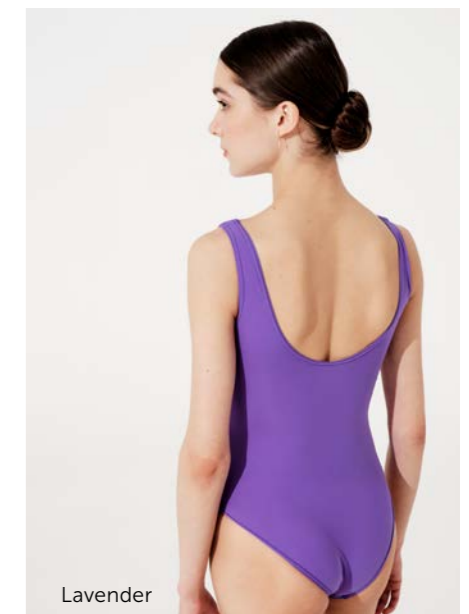
Lavender



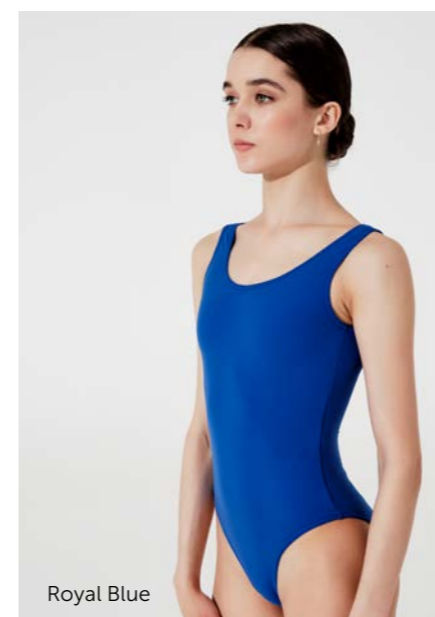
Light Blue



Red



Lavender



Royal Blue



Royal Blue

Adult sizes DP09MP Alyona

International size	XS	S	M	L	XL
Size RU	42	44	46	48	50

Material: 80% polyamide micro, 20% elastane.

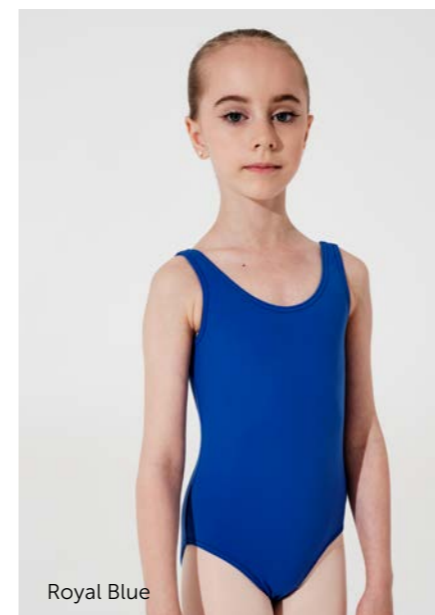
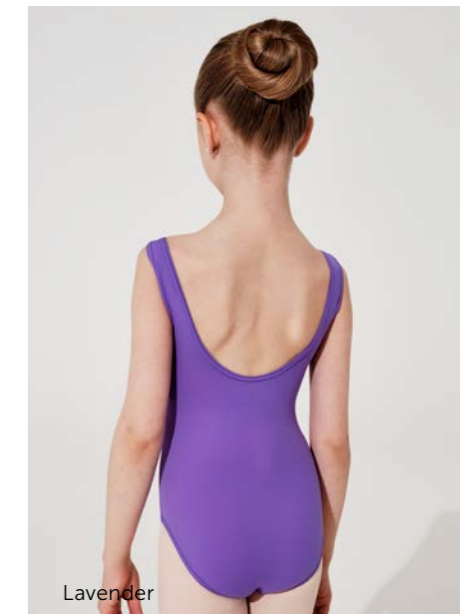
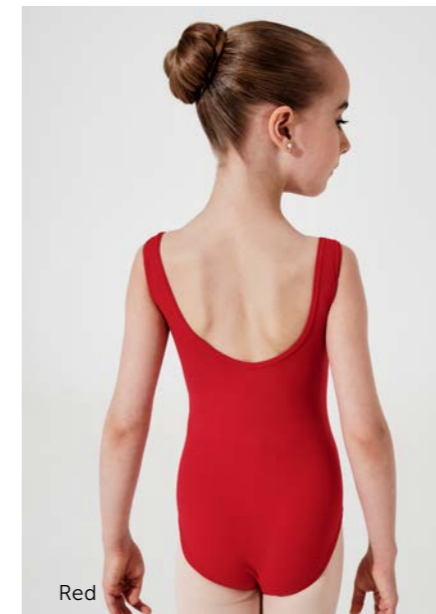
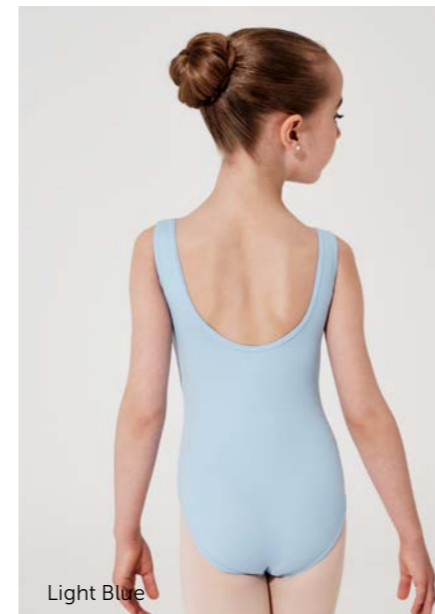
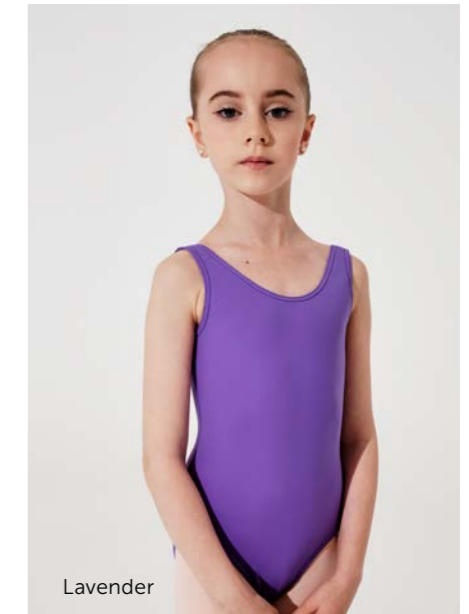
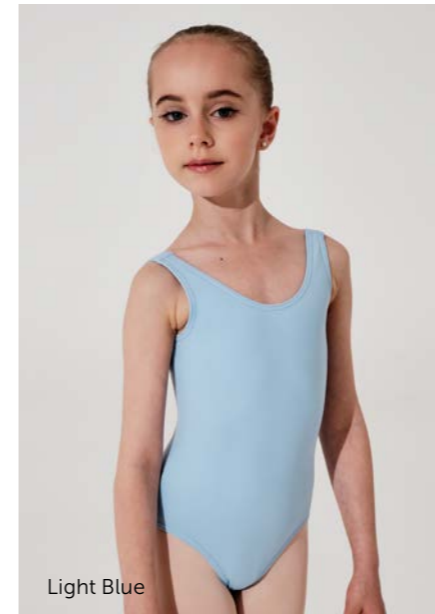
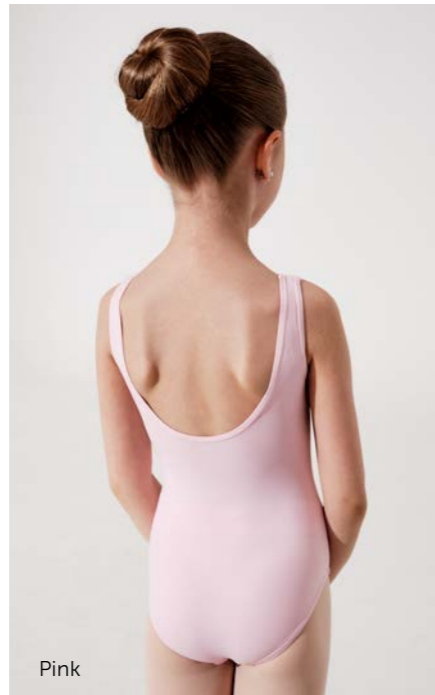
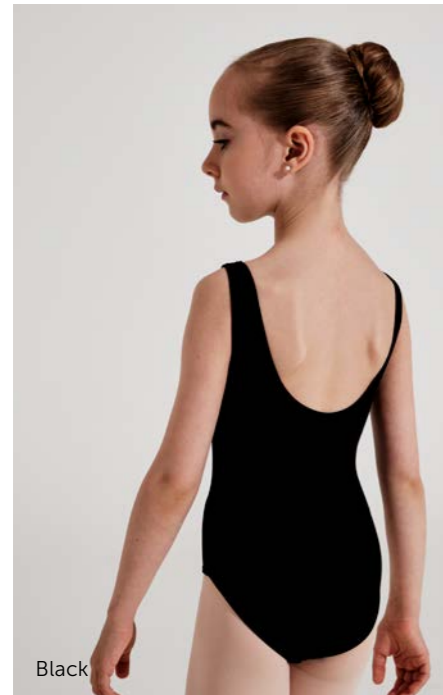
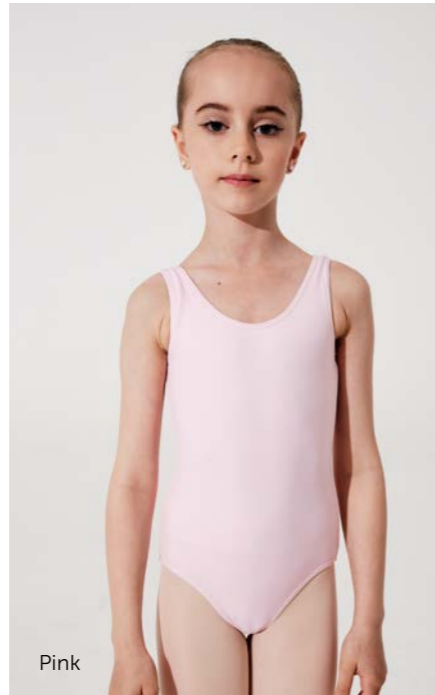
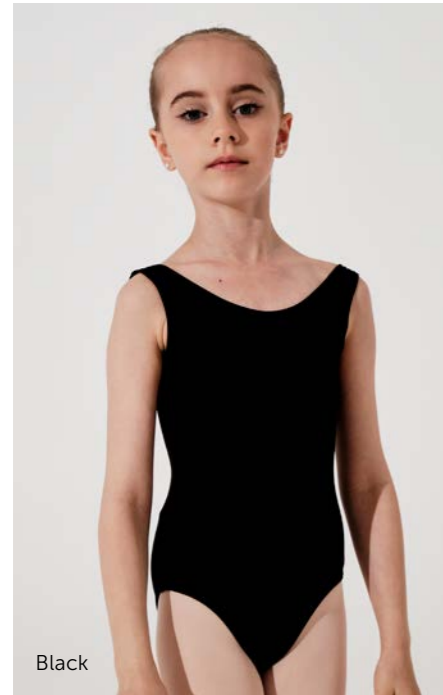
All adult sizes are fully lined.

- Black
- White
- Light Blue
- Pink
- Red
- Royal Blue
- Lilac
- Bordeaux
- Lavender

DPD09MP Little Alyona

Tank leotard

NEW BASIC — Little Alyona is the children's version of Alyona. Featuring a modest scoop neck line with a lower scoop on the back, this lovely leotard also has a ballet cut leg line. With nine colors and five sizes, we have you covered!



Youth sizes DPD09MP Little Alyona

Sizing by age EU	2-4 Y	4-6 Y	6-8 Y	8-10 Y	12-14 Y
Size RU	26	30	32	34	38

Material: 80% polyamide micro, 20% elastane.

All youth sizes are fully lined.

- Black
- White
- Light Blue
- Pink
- Red
- Royal Blue
- Lilac
- Bordeaux
- Lavender

FANTASTIC
FUNCTION
WAS OUR
INSPIRATION
WHEN
CREATING
THESE NEW
SILHOUETTES!



DPO4MP Altunay

Cap sleeve leotard

NEW BASIC — Altunay is our classic short sleeve leotard with a perfectly modest scoop neck line and a slightly lower scoop on the back. Altunay has a ballet cut leg line and comes in nine colors as well as five sizes.



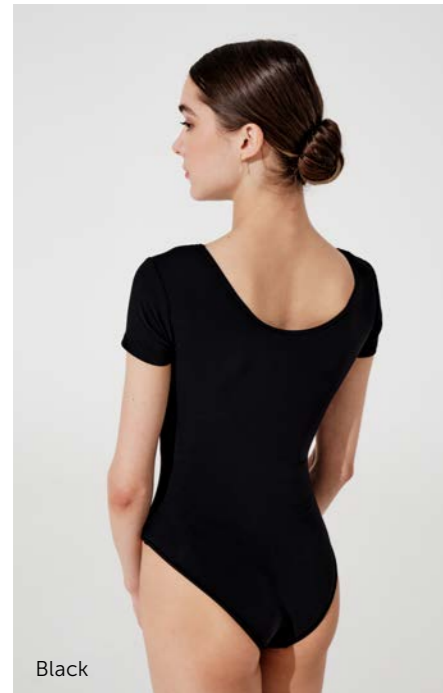
Black



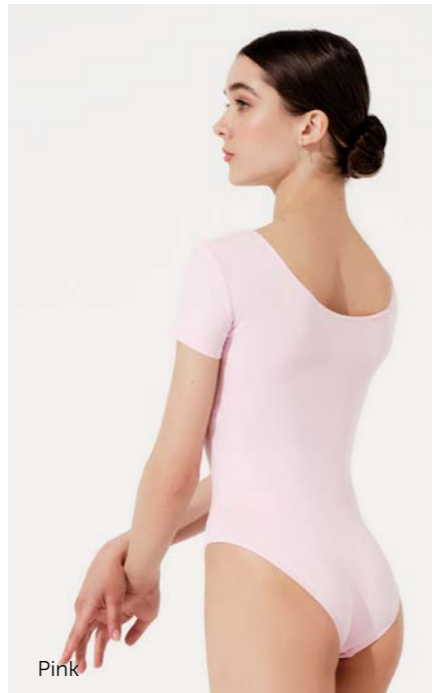
Pink



Lilac



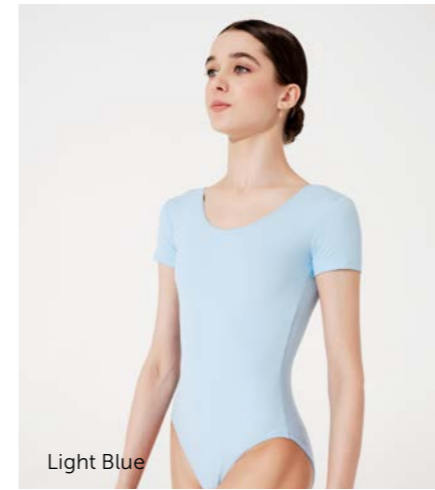
Black



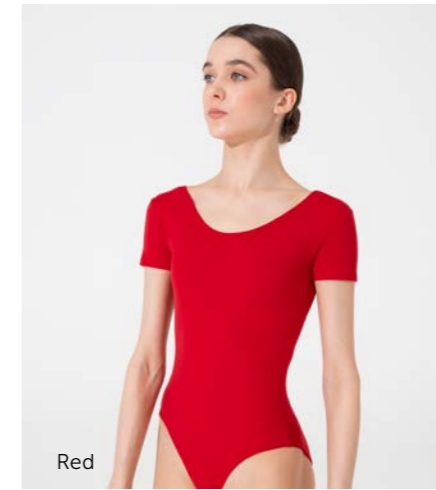
Pink



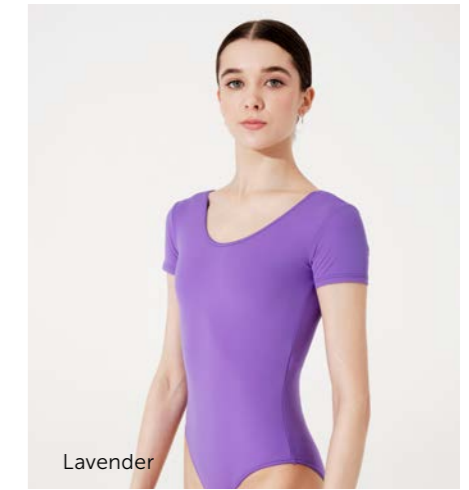
Lilac



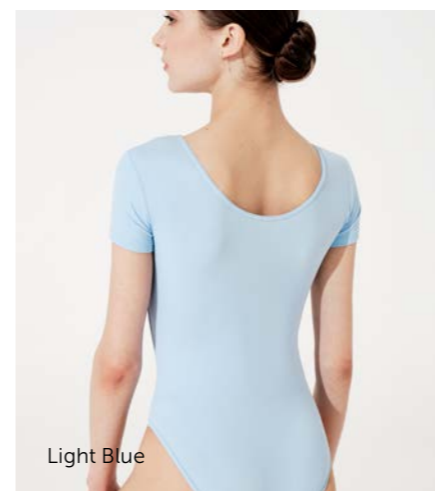
Light Blue



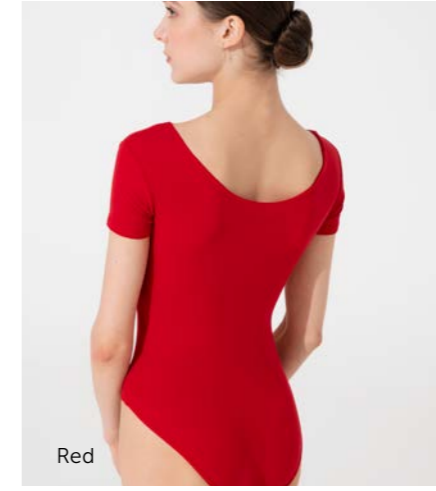
Red



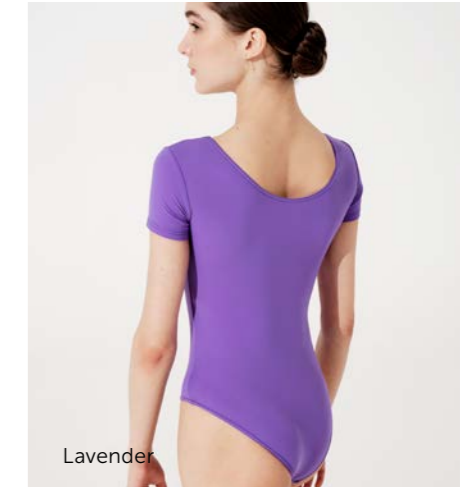
Lavender



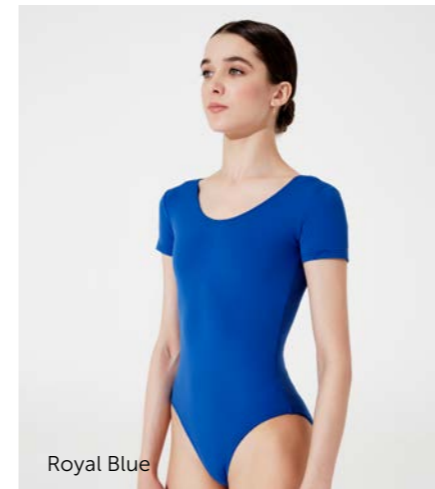
Light Blue



Red



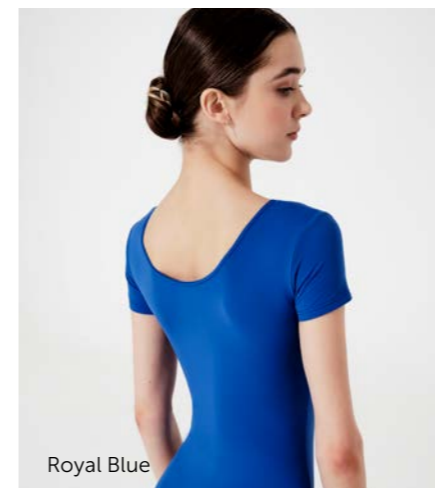
Lavender



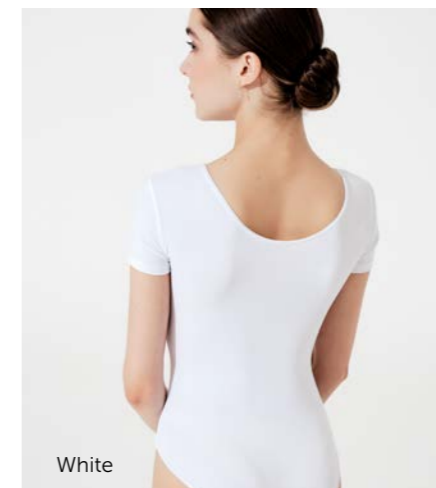
Royal Blue



White



Royal Blue



White

Adult sizes DPO4MP Altunay

International size	XS	S	M	L	XL
Size RU	42	44	46	48	50

Material: 80% polyamide micro, 20% elastane.
All adult sizes are fully lined.

- Black
- White
- Light Blue
- Pink
- Red
- Royal Blue
- Lilac
- Bordeaux
- Lavender

DPD04MP Little Altunay

Cap sleeve leotard

NEW BASIC — Little Altunay is the “little sister” of Altunay. Short sleeves, moderate scoop neck and back and a ballet cut leg line is everything a dancer wants in a leotard. Choose from five sizes and a rainbow of nine colors.



Black



Pink



Lilac



Black



Pink



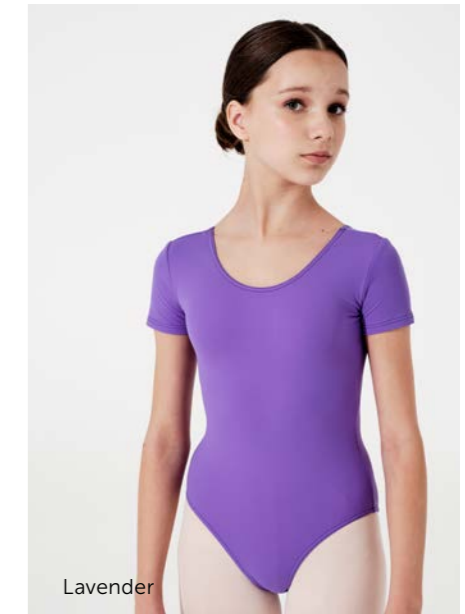
Lilac



Light Blue



Red



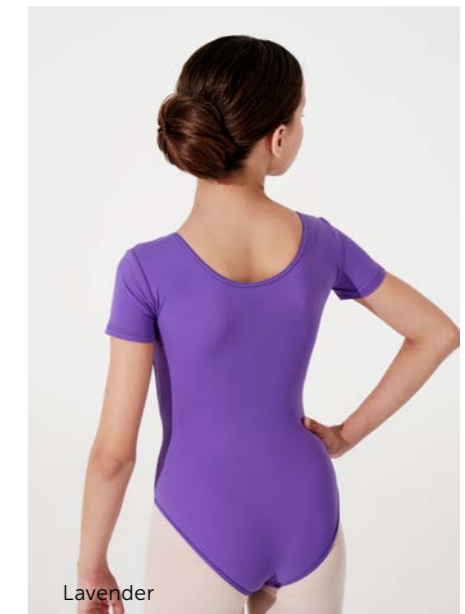
Lavender



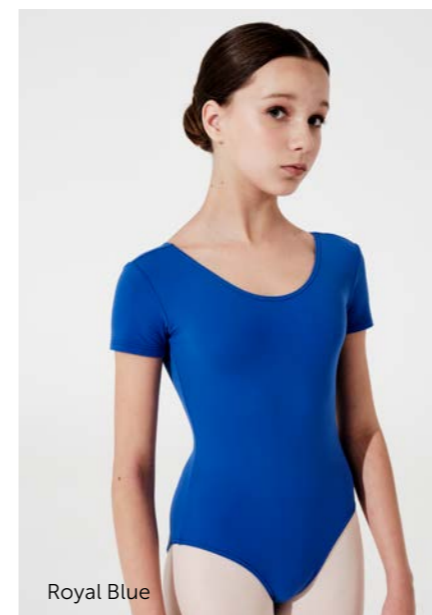
Light Blue



Red



Lavender



Royal Blue



Royal Blue

Youth sizes DPD04MP Little Altunay

Sizing by age EU	2-4 Y	4-6 Y	6-8 Y	8-10 Y	12-14 Y
Size RU	26	30	32	34	38

Material: 80% polyamide micro, 20% elastane.

All youth sizes are fully lined.

- Black
- White
- Light Blue
- Pink
- Red
- Royal Blue
- Lilac
- Bordeaux
- Lavender



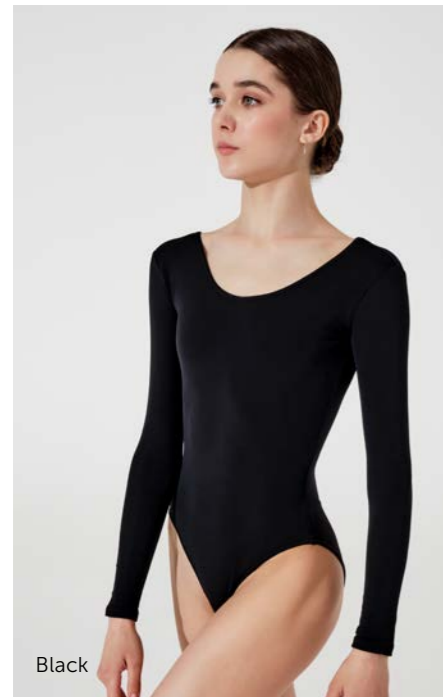
OUR GOAL
WAS TO GO
ABOVE AND
BEYOND
TO MAKE
THE BEST
BASICS ON
THE MARKET



DPO3MP Alina

Long sleeve leotard

NEW BASIC — Alina is our traditional long sleeve leotard which features a moderate scoop neck line with a scoop back and a ballet cut leg line. Available in five sizes and nine colors for uniforming needs.



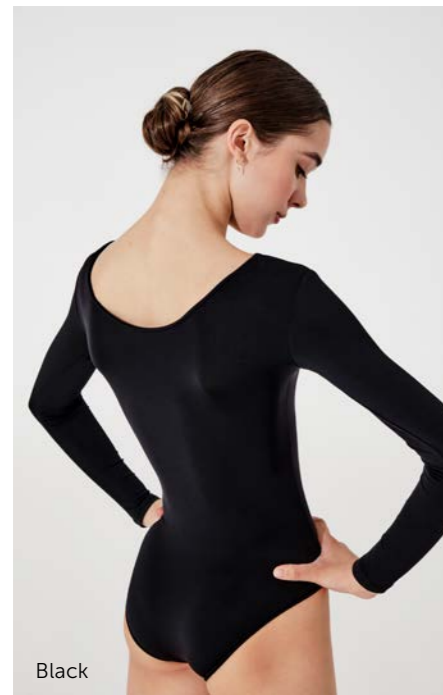
Black



Pink



Lilac



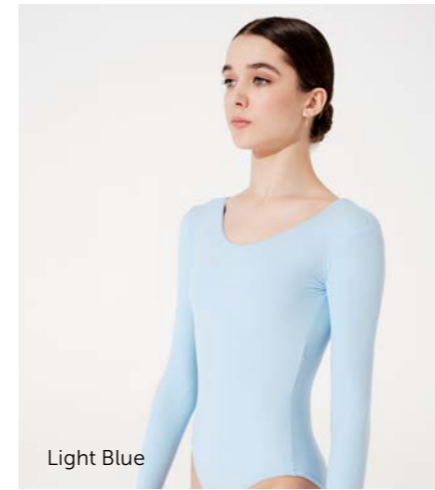
Black



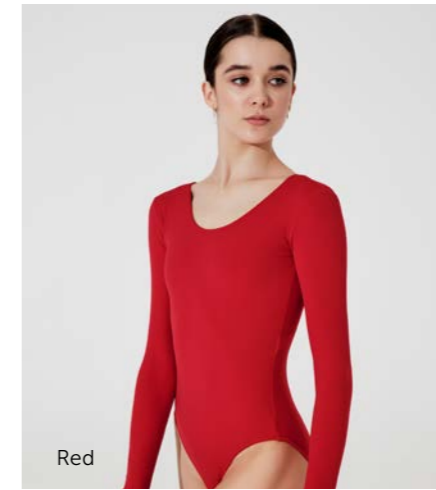
Pink



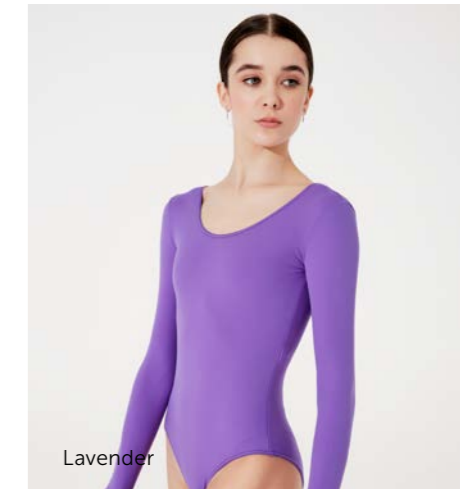
Lilac



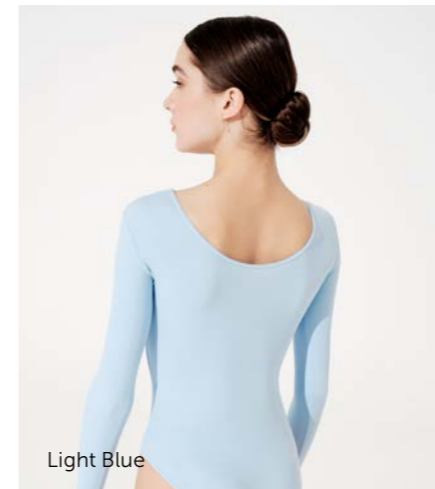
Light Blue



Red



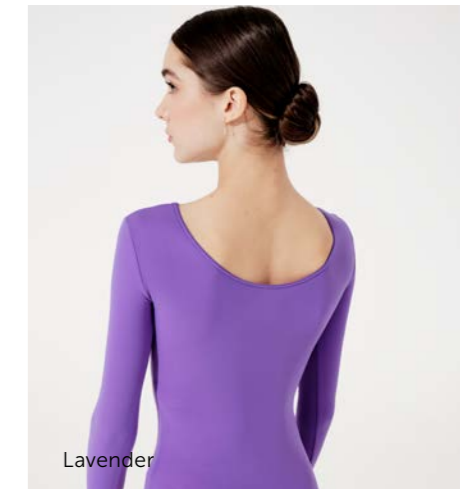
Lavender



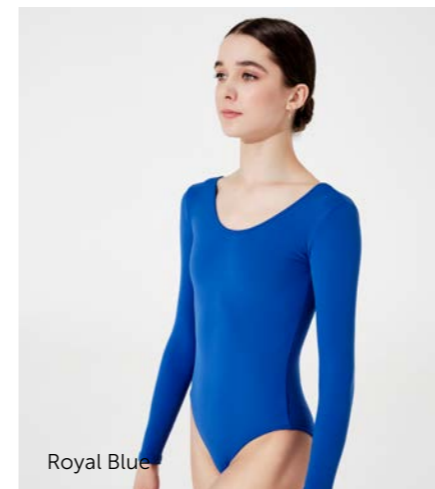
Light Blue



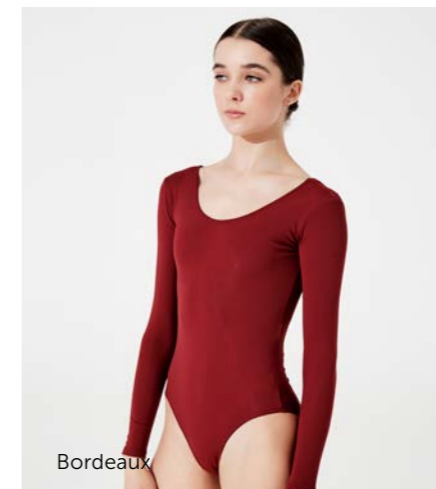
Red



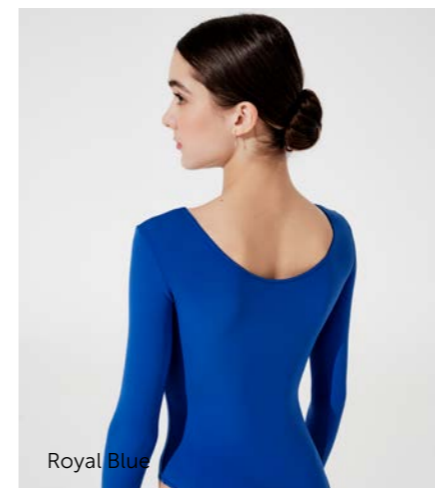
Lavender



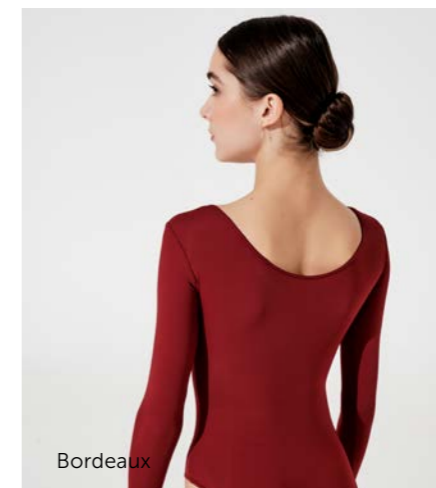
Royal Blue



Bordeaux



Royal Blue



Bordeaux

Adult sizes DPO3MP Alina

International size	XS	S	M	L	XL
Size RU	42	44	46	48	50

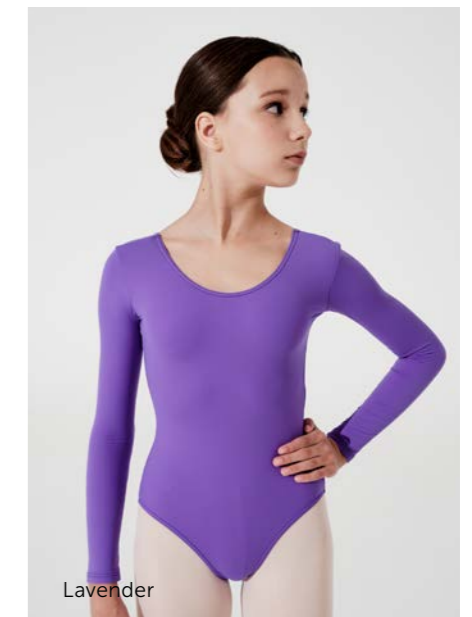
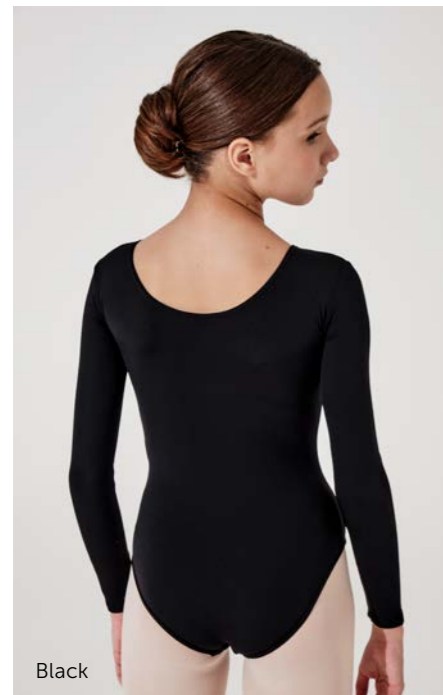
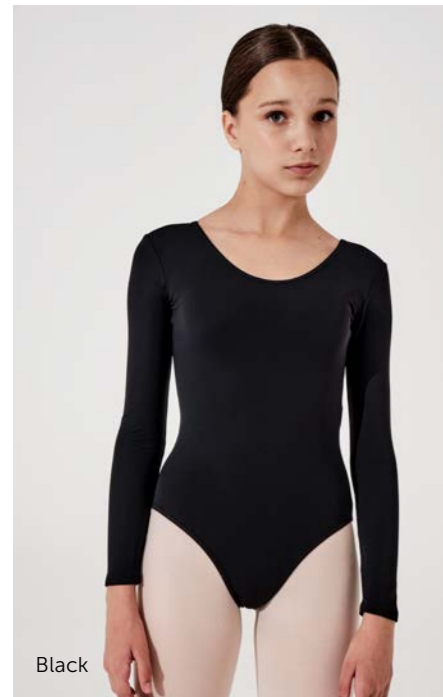
Material: 80% polyamide micro, 20% elastane.
All adult sizes are fully lined.

- Black
- White
- Light Blue
- Pink
- Red
- Royal Blue
- Lilac
- Bordeaux
- Lavender

DPD03MP Little Alina

Long sleeve leotard

NEW BASIC — Little Alina is an identical silhouette to Alina, but in children's sizes. Full length long sleeve with a modest scoop neck and scoop back, Alina has a ballet cup leg line. Offered in five sizes as well as nine colors to choose from.



Youth sizes DPD03MP Little Alina

Sizing by age EU	2-4 Y	4-6 Y	6-8 Y	8-10 Y	12-14 Y
Size RU	26	30	32	34	38

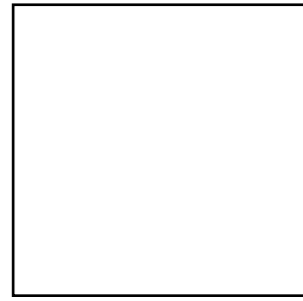
Material: 80% polyamide micro, 20% elastane.

All youth sizes are fully lined.

- Black
- White
- Light Blue
- Pink
- Red
- Royal Blue
- Lilac
- Bordeaux
- Lavender

POLYAMIDE MICRO

80% polyamide micro, 20% elastane



White #1



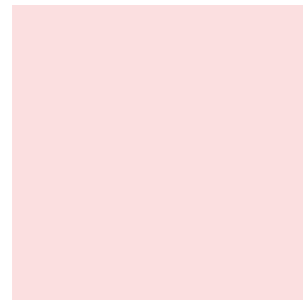
Royal Blue #3



Black #4



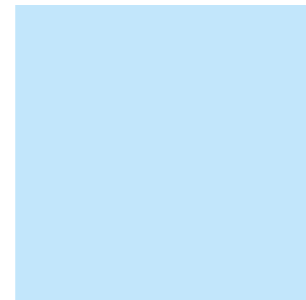
Lavender #8



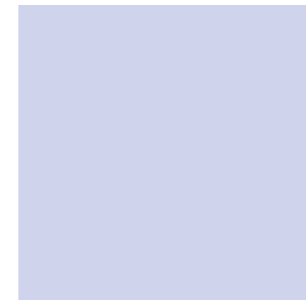
Pink #9



Red #10



Light Blue #18



Lilac #30

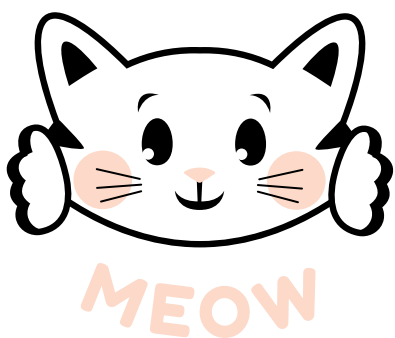


Bordeaux #35

GRISHKO® APPAREL SIZE: CORRESPONDENCE CHART

ADULT SIZES / LADIES					
Height, cm	164	164	170-173	170-176	170-176
Bust Circumference, cm	78-83	83-89	89-91	94-97	97-99
Waist Circumference, cm	61-63	66-69	69-71	71-74	76-79
Hip Circumference, cm	86-91	94-96	96-101	101-104	104-109
International size	XS	S	M	L	XL
Size RU	42	44	46	48	50
Size USA	2-4	4-6	6-8	8-10	10-12

YOUTH SIZES / GIRLS					
Height, cm	104-112	114-127	127-135	140	145-152
Bust Circumference, cm	50-55	55-61	61-66	66-71	73-76
Waist Circumference, cm	50	53	55-58	58	61
Hip Circumference, cm	58-61	63-68	68-74	74-81	81-86
Sizing by age	2-4 Y	4-6 Y	6-8 Y	8-10 Y	12-14 Y
Size RU	26	30	32	34	38



GRISHKO® DISTRIBUTION CENTER

Grishko Dance s.r.o.
Jiřího ze Vtelna 1731 (Areal Pragorent)
193 00 Praha 9 – Horní počernice
+ 420 727 933 480
export@grishko.eu



grishko-world.com



grishkoshop.com



[grishkoworld](https://www.facebook.com/grishkoworld)



[grishkoworld](https://www.instagram.com/grishkoworld)